

DSES SSTV EME Party

September 28, 2024

DSES sponsored a SSTV (Slow Scan TV) event on Saturday 9/28/24. The goal of this event was to exchange SSTV images via EME on the 23cm (1296 MHz) band. Images were transmitted from the KØPRT 60 Foot dish in Haswell, Colorado and received by other stations with EME capability. KØPRT was using an Icom 705 coupled with “Dianne” a custom built transverter and power amplifier mounted at the dish feed point. The output power of the amplifier was 300 watts.

On site that day were Paul NØØT, Bruce KEØVR, Doug KFØPCD, Jake KG7JQB and Vance (SWL).

Others who helped with the setup prior to the event were Ray AAØL, Roger W3MIX, Bill KCØFHN and Bill WTØDX.



The images sent by KØPRT were as follows:

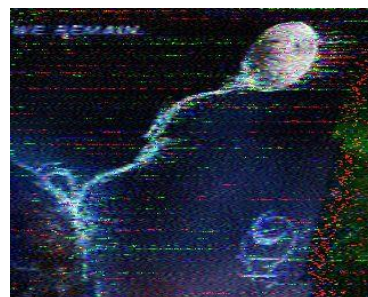
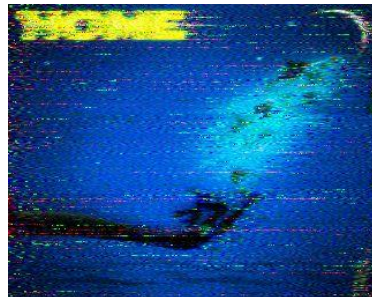




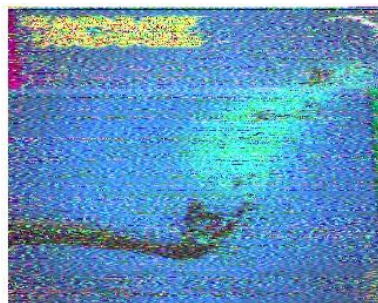
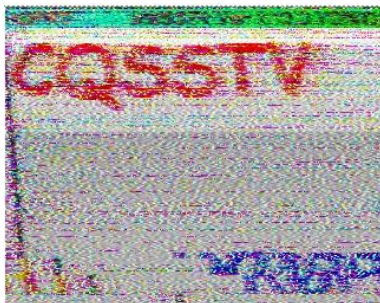
Note that the dish image was provided by PI9CAM (Dwingeloo observatory in the Netherlands 25M dish). The Home and We Remain images were provided by Signaluna.

Here are a representative set of images received at other locations:

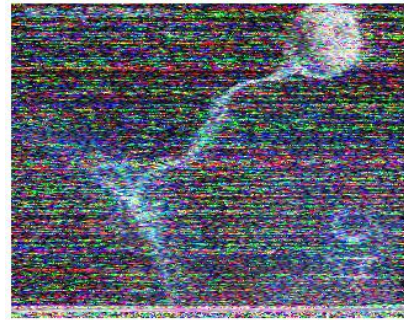
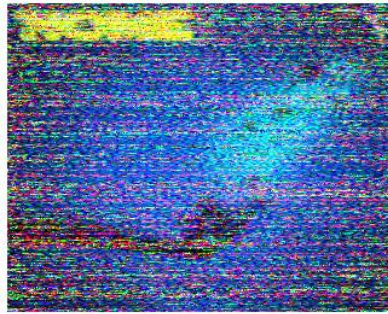
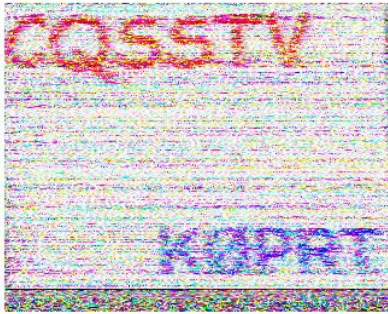
PI9CAM Dwingeloo observatory in the Netherlands 25M dish



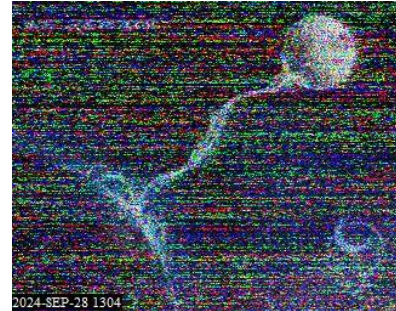
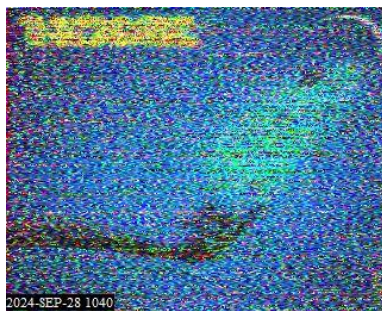
ON5GS Dirk in Belgium 6M dish



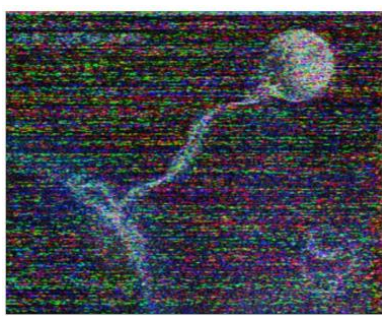
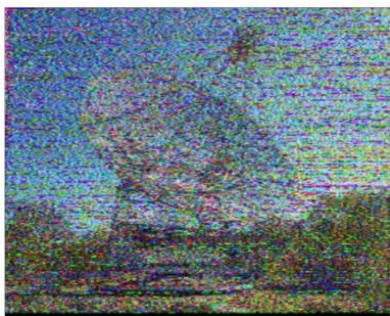
F5KUG Radio Club in France 3.7M dish



PA3FXB Jan in the Netherlands 2.9M dish



KB2SA Bill in California 1.9M dish



Other stations reported receiving images and K0PRT received an image from KB2SA. DSES thanks everyone who participated!